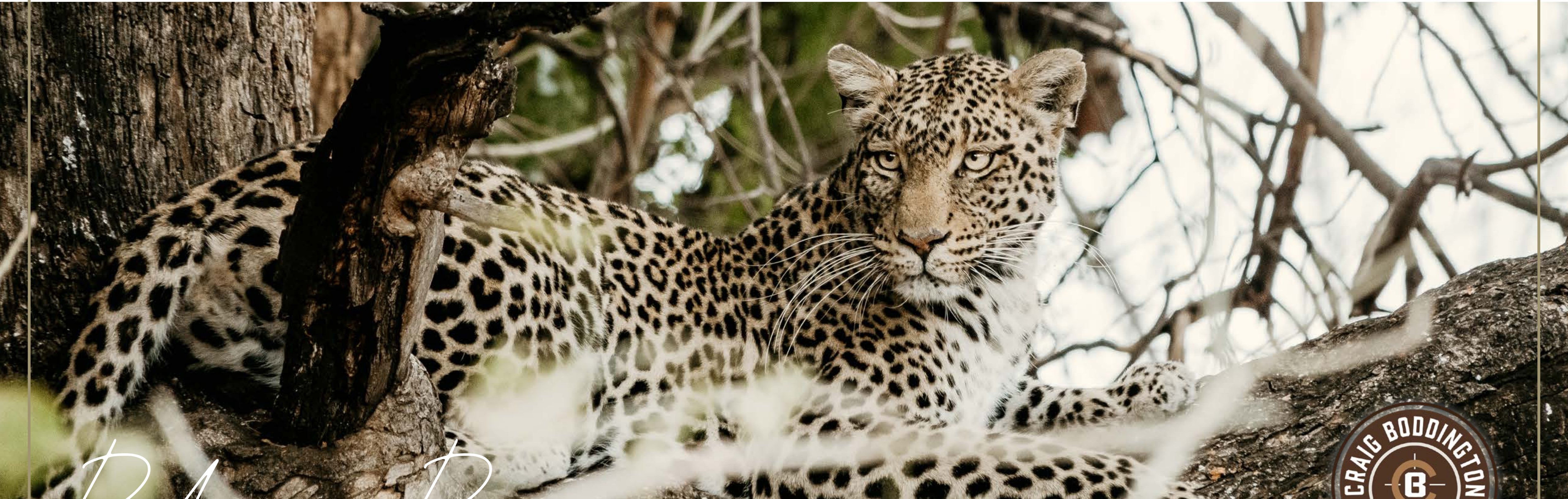




# STANLEY PIETERSE

SAFARIS



*Pride is our Passion*

2024 SAFARI BROCHURE



# TABLE OF CONTENTS

Welcome .....	3-6
Meet the owner .....	7
Meet the team .....	8-9
Craig Boddington Endorsed Outfitter .....	10
<b>KWATARA SAFARIS LODGE:</b>	
Introduction .....	11
Site Map .....	12
The Dining Room .....	14
The Views .....	15
The bedrooms .....	18
Trophy Processing Facility .....	20
Our Preferred Local Taxidermist .....	21
Hunting Guidelines .....	22
Frequently Asked Questions .....	23
Hunting Areas .....	24
<b>BEFORE THE HUNT:</b>	
Preparation (What To Pack) .....	25
Daily Rates Pricelist 2024 .....	26
Trophy Fees Pricelist 2024 .....	27
Hunting Packages .....	28
Daily Rates: Terms & Conditions .....	29
Hunting Packages: Terms & Conditions .....	30
<b>DAY TRIPS:</b>	
Mapungubwe National Park.....	31
Creative Classes .....	32
<b>ACTIVITIES:</b>	
Spa Treatments Info .....	33
Spa Treatments Pricelist 2024 .....	34
<b>SIDE TOUR DESTINATIONS:</b>	
Kruger National Park .....	35
Cape Town .....	36
Victoria Falls .....	37
Botswana .....	38
<b>TROPHY ROOM: 2023 Highlights .....</b>	<b>39-44</b>
<b>CONTACT US .....</b>	<b>45</b>



# WELCOME

Owned and operated by Outfitter and Professional hunter Stanley Pieterse and his wife, Seugnét, we are delighted to invite you to join us on an unforgettable hunting adventure. Located in the picturesque Limpopo province of South Africa, near the Botswana border, our privately owned hunting area provides the perfect setting for all types of hunters, from beginners to seasoned big game hunters.

At Stanley Pieterse Safaris, our mission is to promote sustainability through wildlife conservation and uphold the principles of fair chase in all our hunting endeavors. Whether you prefer to hunt with a bow or rifle, you can expect an authentic and ethical hunting experience that respects both the animals and the environment.

In addition to our local hunting area, we also offer hunts throughout Southern Africa for species not native to our region. If you desire to explore beyond our borders, we provide custom sightseeing tours, photo and fishing safaris tailored to your specific interests and preferences.

Join us on a soul-searching journey as you immerse yourself in the breathtaking beauty of nature, surrounded by the warmth of a crackling fire and the awe-inspiring colors of a majestic sunset. Our goal is to ensure that your time with us in Africa is an exceptionally memorable and timeless experience. Depart with cherished memories, exceptional trophies, and newfound friendships that will last a lifetime.

Once again, welcome to Stanley Pieterse Safaris. We are thrilled to have you as our guest, and we look forward to creating an extraordinary and personalized experience for you and your family.

Best Wishes,

*Stanley, Seugnét, Stanley jr and Stian*



*Our mission is to create*

**LASTING MEMORIES...**



*...and for our family*

**TO SERVE YOURS**



*Come and experience an adventure*

**YOU WILL NEVER FORGET!**



## MEET THE OWNER

*Stanley Pieterse*



Born and raised in the beautiful Limpopo Valley of South Africa and spending the majority of his childhood carrying a gun or casting a fishing pole, he cultivated a profound connection to the outdoors and a deep appreciation for nature. He completed his school years in their hometown formerly known as Pietersburg, where his family still resides. After completing high school his father offered him a position in the family business alongside his two brothers. However, Stanley's desire to immerse himself in the bush and turn his passion into a livelihood compelled him to take a different path. With a courageous leap of faith, he decided to start his own hunting company.

Despite not having the advantage of a family legacy in the hunting industry, Stanley was determined to succeed. It was in 2007 when Stanley Pieterse Safaris was established. Starting small, he initially focused on guiding hunts for South African clients. It was during this time that Stanley discovered his true passion - the thrill of bringing hunters close to their target and witnessing the excitement in their eyes as they pull the trigger.

This realization ignited a deep passion within him to not only experience the thrill of hunting but also to share this passion with others. With every successful hunt, Stanley accumulated valuable experience in the hunting industry, honing his skills and cultivating an ambition to bring his unique safari experiences to a global audience.

Today he offers his clients a truly unforgettable adventure, immersing them in the untamed beauty of nature and providing them with the opportunity to create memories that will last a lifetime.

Stanley continues to seek new and exciting hunting adventures for his clients. His steadfast dedication to professionalism, integrity, a keen eye for detail and an unwavering commitment to providing a world-class hunting experience has made Stanley Pieterse Safaris a trusted name in the hunting community.

Stanley's journey from humble beginnings to success is a testament to his passion and unwavering dedication. His ability to combine his love for nature, his knowledge of the bush, and his entrepreneurial spirit to defy conventional paths has allowed him to create a thriving business that not only fulfills his own dreams but also contributes to the preservation of wildlife.

## MEET THE TEAM

*Professional hunters*



### PIETER VERMAAK

Pieter grew up in the Alldays area and has been hunting from a very young age. He shot his first animal with his dad when he was just 8 years old. It was from that moment on that he developed a deep appreciation for nature and hunting. Pieter did his professional hunters course in 2009 at the age of 21, and he has been with our company for more than 10 years now. Pieter enjoys the outdoors and the calmness that it brings him when walking and spending time in God's creation.



### MATT MARE

Matt was raised on a farm in the lowveld of Zimbabwe. Growing up him and his older brother spent all of their childhood in the bush fishing and hunting, and this is where he developed his love for wildlife. He started his apprenticeship in 2010 with a big company in Zimbabwe where he managed to gain lots of experience hunting open areas and dangerous game. He relocated to South Africa, got his license and started hunting here in 2016. In Matt's own words; "Hunting and conservation is not a job but a passion and we are dedicated to looking after this way of life for future generations to come and we hope to give each client that joins us a small bit of the passion that we hold so high in the bush."



### LUAN STEYN

Luan was born and raised here in Alldays and grew up farming and hunting on their family farm. His father was an outfitter for many years and took Luan hunting when he was only 3 years old, it was here where he shot his first animal. Luan started at our company in 2021 and we asked him why he loves hunting to which he replied, that he enjoys being in the bush every day, experiencing the beauty of God's creation, meeting new people and making their dreams come true.



# MEET THE TEAM

*Lodge manager, camp and hunting staff*



**ANNEMARI**  
**LODGE MANAGER**

Anna joined our team in 2023 and is responsible for making sure you and your family's needs are well taking care of. She attends to non-hunting family members wanting to partake in day trips and activities. Anna is always willing to help wherever and whenever she can.



**LINDA**  
**CHEF**

Linda has been cooking up a storm in our kitchen for the last 3 years. Clients absolutely love Linda's cooking and everyone wants to take her home. Linda may be shy and quiet, but make no mistake, she can cook a delicious game fillet.



**BEAUTY**  
**LAUNDRY**

Beauty is the trusty hands working behind the scenes, making sure you have an empty laundry basket, clothes washed, neatly folded and placed in your room and clean crisp linen to welcome you after a long day out hunting.



**SIKULU**  
**CLEANING**

Sikulu is responsible for keeping everything clean and tidy, from making beds to mopping floors and everything in between, she is the "fairy" responsible for cleaning your room and making sure everything is squeaky clean.



**PATRICIA**  
**CLEANING**

Patricia is Sikulu's little "fairy helper", because four hands are better than two, so to speak, and cleaning an entire lodge is no small task. Together they get the job done.



**STEPHEN**  
**SKINNER & TRACKER**

Stephen is the Skinning Shed skinner. He has the very important job of taking care of your trophies from the moment they arrive at the shed. He skin the animals, place them in salt, clean the skulls, tag every part of your animal with your credentials and make sure everything is ready for the taxidermy.



**MECHANIC**  
**DRIVER, SKINNER & TRACKER**

Stanley's right hand man. Mechanic will be your designated driver accompanying you on your search for that trophy animal. Mechanic is an excellent tracker with many miles under his boots. He has a very high success rate in retrieving wounded animals.

# CRAIG BODDINGTON ENDORSED OUTFITTER SINCE 2017

“A lot of the Limpopo Valley is fairly flat thorn bush, but Stanley Pieterse Safaris is a little bit unusually in that it’s in really hilly country with a lot of really big big rocky ridges. Stanley operates a small personal family operation, they’ve got a small number of chalets, so they cater to smaller groups and I tell you what, their camp is one of the nicest I have ever been in. They have a boma and a pool that overlooks a waterhole where you’re going to see game. Their own place is really beautiful, host a wide variety of species; Kudu, Eland, the little guys; Steenbuck all the way up to Buffalo, some great Buffalo right there on his property, and of course they have concessions all around the area, able to hunt literally the entire Limpopo Valley and on beyond, depending on the game you want, but Stanley is really a cut above in catering and service, their camp is just absolutely lovely, they

offer wonderful personal service and they’re more than happy to arrange trips into Kruger and sightseeing trips around the country, before or after your safari. They do a really, really fine job and I tell you what, I really enjoyed seeing their Buffalo, they have some great bulls wandering around that country, some wonderful Kudu, good Eland, great Sable and really all the rest. Stanley and his wife do a really fine job of making their customers feel right at home and I tell you what, their place is truly a home away from home. Stanley Pieterse Safaris, they do a fantastic job and you know what, you look at little things that kind of enable you to judge the quality of an outfit, wait till you see their butchery where the meat is recovered, it is absolutely state of the art, so that everything is properly taken care of, man, Stanley Pieterse Safaris is a great place to go for small groups that want personal service. You’re going to love it!”

- CRAIG BODDINGTON



WELCOME TO  
**KWATARA SAFARI LODGE**  
*spoiled by nature*



# KWATARA SAFARI LODGE

*The site map*





As the sun sets behind the hill and we greet the day, come and enjoy traditionally inspired rituals in our outdoor boma such as after dinner drinks, snacks and the good company of your professional hunter. This will offer you the perfect opportunity to recount on the days' hunting while enjoying the ambience created by the sounds of a crackling fire, jackal and hyena calling in the distance and night skies lighting up with millions of stars. This is the epitome of what it is like to live in Africa.



# KWATARA SAFARI LODGE

## *The dining room*

The chef will prepare an array of traditional African cuisine, catered, whenever possible, to your special dietary requirements. A stocked bar provides you with a wide selection of locally available wines and spirits.





**N**estled on a hill, our luxury stone and thatch-roofed lodge sensibly integrates itself into the surrounding environment. The view from the bar, pool and even the firepit area overlooks a waterhole frequently visited by wildlife.

Whether you prefer a game of billiard, relaxing on the deck with a cold drink or taking a dip in the swimming pool with its panoramic views, our luxurious, yet comfortable lodge will make for a great location for all to enjoy, including non-hunting family members.

## KWATARA SAFARI LODGE

*the breathtaking views...*







# KWATARA SAFARI LODGE

## *The bedrooms*



**T**he bedrooms are luxury, air-conditioned en-suite chalets with twin or king sized beds, clean crisp linen and fresh towels, laundry basket and writing table with a big mirror.

Decorated to echo the colours and textures of Africa, this stone and thatch roofed chalet breath comfort and quality and will make you truly feel at home. The rooms are fitted with flushing toilets, a shower, bath and basin, hot and cold water and electrical sockets running at 220 volts. The electrical sockets in the headboards are fitted with two USB ports on each side, allowing you to still charge your electronic devices without a power converter.



Our lodge can accommodate up to 14 guests in our 5 en-suite rooms and 1 family suite with two bedrooms sharing a bathroom.

# FACILITIES

## Trophy Processing



**W**e pride ourselves in providing our clients with top quality trophy handling facilities. We will see to it that your trophies are skinned and processed in the correct manner, using the proper methods to ensure good taxidermy work.

As soon as your trophy has been harvested and pictures taken, we will carefully load your trophy and transport it back to our processing facility. Here we will hoist your trophy from the vehicle and move it to the skinning area by means of a riling system. Our qualified skinner will see to it that your trophy is carefully processed. Each part of the trophy is then tagged with your details; name, surname and what part of the trophy it is. This ensures that there will not be any confusion as to what trophy belongs to which hunter.

After the meat has been moved inside our cold room and each trophy part has been properly tagged, the different parts undergo further processing.

Firstly, the skins are subjected to a pickled bath to ensure all possible bacteria are killed. The skins are then moved to a salt pit, which

extracts any excess moisture. After the skins has been in the salt for approximately two days, it is then moved to our drying area to be spread out and hanged until it is 90% dried. This allows the skins to be neatly folded and stored on our packaging racks, ready to be shipped to our preferred local taxidermist.

The skulls are boiled to remove any excess flesh, taking care not to submerge the horns in the water. After the boiling process is complete our skinner takes care of any leftover pieces of fat or flesh. The skulls are then placed in the salt pit to remove any remaining moisture. When the entire process is complete the skulls are then stored on our packaging racks, ready to be shipped to our local taxidermist.

We will personally handle the paperwork needed to conduct the export of your trophies.

You have two options available to choose from; your trophies can either be dispatched to our preferred local taxidermist for full taxidermy work or exported as "dip-and-pack" to your preferred taxidermist in your home country.

# TAXIDERMISTRY

## Trophy Solutions Africa

**T**he saying goes; “You’re only as good as the people you surround yourself with.” It is here where you realize your own worth. We have been doing business with Trophy Solutions Africa since 2015, and what a pleasure it always has been. Their level of professionalism is out of this world and their mounting work is even more spectacular.

To reach new heights of success in our business we believe in surrounding ourselves with suppliers who not only inspire us, but challenge us. Because our service does not stop when your safari with us concludes, we believe in handing over your trophies to a reputable taxidermist that value great service just as much as we do, ensuring an end product you will be proud to show off to your family and friends.





# HUNTING

## Guidelines

### PROFESSIONAL HUNTERS, STAFF, SKINNERS & TRACKERS

Our team of dedicated, licensed and highly experienced Professional Hunters, trackers and skimmers, will guide, assist and accompany you every step of the way, guaranteeing your safety and maximizing your chances of success. Together, the team has guided clients armed with rifle and bow to more than 50 species of game.

### HUNTING VEHICLES

We utilize a fleet of new, well-maintained, fully equipped 4x4 hunting and utility vehicles. Our vehicles all have radio communication to keep in contact with the camp and each other.

### SHOOTING RANGE

We have a very well equipped 150-yard shooting range that will ensure that you will be able to zero your rifles properly and hassle free before you go in search of that dream trophy.

### SHOT PLACEMENT

On average the majority of shots are taken between 100-200 yards for rifle hunting and for bow hunting between 15-30 yards. Your Professional guide will also discuss shot placement with you and demonstrate the best placement by means of reference pictures indicating the appropriate placement depending on the stance of the animal.

# FREQUENTLY ASKED QUESTIONS



## **DO YOU HAVE RIFLES AND AMMUNITION FOR RENT IF I DON'T WANT TO BRING MY OWN RIFLE?**

Yes, we do have rifles and ammunition for hire, ranging from calibres .270 to .375. Hiring fee is \$50 per day per rifle, and cost price for ammunition, about \$3 per round, depending on the calibre.

## **IS A 7 DAY HUNT 7 FULL DAYS OF HUNTING, OR DOES THAT INCLUDE THE DAY OF ARRIVAL AND DEPARTURE?**

A 7 day hunt, excludes arrival and departure days. Therefore a 7 day hunt will be 9 days in Africa.

## **WHAT CAN MY WIFE DO IF SHE COMES ALONG?**

It is always nice to relax on the deck at the lodge, that overlooks a waterhole, frequently visited by game. She can also join us in the field or be taken to the nearby cities and places of interest, there is always much to see and things to do. We can also arrange a spa day in camp where your wife can enjoy a relaxing massage or facial treatment.

## **DO WE EAT THE GAME WE SHOOT?**

Yes we do. The game can be prepared in different and delicious ways, which will add to the experience of the hunt.

## **HOW DO I GET MY TROPHIES HOME?**

We will provide you with a reliable reference to look after and ship your trophies home. During your stay with us we will take you to at least one local taxidermist, so that you can check the quality of their work. If you prefer to mount your trophies at home, our local taxidermist will dip and pack your trophies and organize that they get safely to your chosen taxidermist.

## **WHEN IS THE BEST TIME TO GO ON A SAFARI?**

Our best months for hunting is from April through to the end of September, these are our cooler winter months, and we will not be getting much rain during this time, however we do hunt throughout the year. So the best time will be as soon as possible, when it suits you.



# HUNTING AREAS

Stanley Pieterse Safaris operates in the scenic Limpopo province of South Africa. Situated just 3 miles away from the majestic Limpopo river and the Botswana border, our location provides us with an incredible natural setting to offer our clients an unforgettable experience.

Our 6000-acre privately owned game reserve serves as our base, where we provide hunting opportunities for both plains game and dangerous game. Whether you are an experienced hunter seeking a thrilling challenge or a novice looking to embark on your first hunting adventure, we have a variety of options to cater to your needs.

We also offer hunting and photographic safaris across southern Africa in countries like Botswana, Namibia, Zimbabwe, Mozambique, and Zambia. Embark on an adventure like no other as you explore the vast African landscapes and encounter some of the world's most iconic wildlife.

At Stanley Pieterse Safaris, your satisfaction is our top priority. That is why we go above and beyond to provide a personalized experience for each and every client. Let us know what you would like to hunt, and we will personally arrange and accompany you on a safari of a lifetime. From organizing permits and licenses to arranging accommodations and transportation, we take care of every detail, allowing you to focus solely on the thrill of the hunt.

Choose Stanley Pieterse Safaris for an unforgettable journey into the heart of African wilderness. Experience the thrill of the chase, the beauty of the land, and the camaraderie of a truly exceptional safari.

**PLEASE ENQUIRE FOR MORE INFORMATION IF YOU ARE INTERESTED IN HUNTING IN BOTSWANA, ZIMBABWE OR MOZAMBIQUE.**





# BEFORE THE HUNT

## Preparations

### ALLDAYS LIMPOPO CLIMATE

	MINIMUM	MAXIMUM
WINTER (MAY - AUGUST)	45°F	85°F
SUMMER (SEPTEMBER - APRIL)	70°F	100°F

### WHAT TO PACK

#### CLOTHING AND PERSONAL ITEMS

4 PAIRS OF HUNTING PANTS, SHIRTS AND BELT (DARK KHAKI, OLIVE GREEN OR CAMMO)

HUNTING JACKET (DARK KHAKI, OLIVE GREEN OR CAMMO)

COMFORTABLE/WORN IN HUNTING BOOTS AND 4 PAIRS OF SOCKS (FLAT SOLE BOOTS MAKE LESS NOISE WHEN WALKING)

ONE PAIR OF GLOVES

LIGHT JACKET AND SWEATER

WARM JACKET AND SWEATER (JUNE - AUGUST)

CAMP SHOES OR SNEAKERS

SAFARI HAT AND/OR CAP

3 PAIRS OF CASUAL CLOTHES FOR CAMP AND TRAVEL

UNDERWEAR AND TOILETRIES

PRESCRIPTION AND PERSONAL MEDICATION (ANTI-MALARIA IF REQUIRED)

SUNGLASSES

CAMERA AND/OR VIDEO CAMERA AND CHARGERS/BATTERIES

BINOCULARS

POWER CONVERTER KIT FOR SOUTH AFRICA (ALSO TAKE INTO CONSIDERATION OTHER COUNTRIES YOU MIGHT BE VISITING)

SOUTH AFRICA RUNS ON 220 VOLT. THUS A 220V TO 110V CONVERTER IS NEEDED WITH A PIN PLUG THAT FIT OUR SOUTH AFRICAN SYSTEM

*LAUNDRY DONE ALMOST DAILY. DON'T OVER PACK!*

#### EXTRA GEAR (NOT ALL MANDATORY)

SHOOTING STICKS IF YOU PREFER YOUR OWN (YOUR PH WILL HAVE A SET AVAILABLE TOO)

USB/SD CARD FOR COPYING YOUR PROFESSIONAL HUNTER'S PHOTOS

FLASHLIGHT/HEADLAMP

POCKET/HUNTING KNIFE

SMALL BACKPACK TO KEEP YOUR EQUIPMENT FOR DAILY HUNTING

RIFLE SOFT CASE FOR EACH RIFLE TO PROTECT FROM DUST AND BUMPS ON RIFLE RACKS ON THE BACK OF MOVING VEHICLES

#### FINANCIAL AND PERSONAL DOCUMENTS

PASSPORT (VALID FOR SIX MONTHS AFTER SAFARI WITH A MINIMUM OF 2 FREE PAGES)

AIRLINE TICKET

CONTACT NUMBERS OF OUTFITTER & HOTEL RESERVATIONS NUMBER IF NECESSARY

DEBIT/CREDIT CARDS (OUR MACHINE ACCEPTS VISA AND MASTERCARD ONLY!!)

CASH (FOR PROFESSIONAL HUNTERS AND STAFF GRATUITIES - NEW AMERICAN NOTES ONLY!!)

STANLEY PIETERSE SAFARIS INVITATION FORM (WE WILL PROVIDE YOU WITH THIS DOCUMENT)

ANY CITES PERMITS YOU MAY REQUIRE

TAXIDERMY TAGS IF YOU ARE USING YOUR OWN TAXIDERMIST/SHIPPING INSTRUCTIONS

#### WHEN TRAVELLING WITH A FIREARM (EXCLUDING CROSS-BOW AND TRADITIONAL BOW)

US 4457 FORM

ORIGINAL NOTARISED COPY OF YOUR PASSPORT (WITH A MINIMUM OF 6 MONTHS VALIDITY AFTER YOUR SAFARI + 2 FREE PAGES)

COPY OF YOUR FLIGHT ITINERARY

FIREARM IMPORT EXPORT FORM (SAPS 520)

STANLEY PIETERSE SAFARIS INVITATION FORM (WE WILL PROVIDE YOU WITH THIS DOCUMENT)

#### PLANNING ON USING YOUR DEBIT OR CREDIT CARD?

**PLEASE TAKE NOTE!!** WHEN YOU ARE PLANNING ON USING YOUR DEBIT AND CREDIT CARD OR DOING AN ELECTRONIC WIRE TRANSFER, IT IS VERY IMPORTANT TO INFORM YOUR BANK BACK HOME OF YOUR TRAVELLING PLANS AND THAT YOU WILL BE SPENDING MONEY.

# DAILY RATES

2024 pricelist

DAILY RATES & SERVICE FEES	USD \$
1 HUNTING CLIENT + 1 PROFESSIONAL HUNTER	\$400 P/D
2 HUNTING CLIENT + 1 PROFESSIONAL HUNTER	\$350 P/D
OBSERVER / NON HUNTER	\$250 P/D
PREDATOR CALLING / PER NIGHT / PER SESSION	\$150
RIFLE HIRE / PER CALIBRE / PER DAY (EXCL AMMO)	\$50
AMMUNITION (APPROX \$3/ROUND)	At Cost

TRANSPORTATION	NUMBER OF PEOPLE IN YOUR PARTY		
	ONE	TWO	3 OR MORE
For Pickup and drop off at OR Tambo International Airport in Johannesburg	\$800 PER PERSON	\$400 PER PERSON	\$250 PER PERSON

SURCHARGES ON TRANSACTIONS	PERCENTAGE
Credit / Debit Cards	3.5%
PayPal	3.5%
Cash or Wire Transfer	0%

DAY TRIPS & ACTIVITIES <i>(Can be booked on arrival)</i>	USD \$
MAPUNGUBWE HALF DAY TRIP (Minimum of 2 people, priced per person sharing)	\$150 P/P/P/D
MAPUNGUBWE FULL DAY TRIP (Minimum of 2 people, priced per person sharing)	\$200 P/P/P/D
TIGER FISHING DAY TRIP (Minimum of 2 people, priced per person sharing)	\$250 P/P/P/D
LOCAL TRANSFER TRIP - INCLUDES LUNCH (ALLDAYS SHOPPING)	\$100 PER/VEHICLE/DAY/3 PAX
SPA TREATMENTS IN CAMP	PRICELIST ON PAGE 34
AFRICAN CRAFT ART CLASSES HALF DAY (+/- 50MIN DRIVE FROM CAMP)	\$100 P/P/P/D
AFRICAN CRAFT ART CLASSES FULL DAY (+/- 50MIN DRIVE FROM CAMP)	\$150 P/P/P/D
LOCAL TRANSFER TRIP - INCLUDES LUNCH (POLOKWANE SHOPPING)	\$250 PER/VEHICLE/DAY/3 PAX
POTTERY CLASSES (POTTERY PACKAGE)	\$100 P/P
POTTERY CLASSES (POTTERY AND YOGA PACKAGE)	\$150 P/P

## PHOTOGRAPHIC SAFARIS

*If you have specific preferences or locations in mind, please let us know. We will be delighted to customize your photographic safari accordingly.*

**PLEASE NOTE! WHEN PAYING WITH A CREDIT OR DEBIT CARD A SLIGHT DIFFERENCE IN CHARGES MAY OCCUR DUE TO EXCHANGE RATE FLUCTUATIONS BETWEEN THE TIME OF PAYMENT AND WHEN THE FUNDS HAVE CLEARED.**

**IMPORTANT!! REMEMBER TO INFORM YOUR BANK THAT YOU WILL BE TRAVELLING!!**

# TROPHY FEES

2024 pricelist

TROPHY FEES		
SPECIES	PRICE (USD \$)	AREA
BABOON	\$350	LIMPOPO
BLACK WILDEBEEST	\$1000	FREESTATE
BLESBUCK (COMMON)	\$600	LIMPOPO/FREESTATE
BLESBUCK (WHITE)	\$750	FREESTATE
BLUE WILDEBEEST	\$1200	LIMPOPO
BONTEBOK	\$2000	FREESTATE
BUFFALO (CAPE)	\$12000	LIMPOPO
BUSHBUCK	\$1500	LIMPOPO
BUSHPIG	\$900	LIMPOPO
CROCODILE OVER 11FT	\$7000	LIMPOPO
CROCODILE UNDER 11FT	\$5000	LIMPOPO
DUIKER (COMMON)	\$500	LIMPOPO
DUIKER (RED)	\$2500	LIMPOPO
ELAND (FEMALE)	\$800	LIMPOPO
ELAND (MALE)	\$3300	LIMPOPO
ELEPHANT	ON REQUEST	ON REQUEST
GEMSBUCK (ORYX)	\$1700	LIMPOPO/FREESTATE
GIRAFFE	\$3000	LIMPOPO
GREY RHEBUCK	\$2200	FREESTATE

TROPHY FEES		
SPECIES	PRICE (USD \$)	AREA
GRYSBUCK SHARPES	\$3200	LIMPOPO
HIPPO	\$10000	LIMPOPO
IMPALA	\$500	LIMPOPO
KLIPSPRINGER	\$1800	LIMPOPO
KUDU (MALE)	\$3300	LIMPOPO
LECHWE (RED)	\$2500	FREESTATE
LEOPARD	ON REQUEST	ON REQUEST
LION (FEMALE)	ON REQUEST	ON REQUEST
LION (MALE)	ON REQUEST	ON REQUEST
NYALA	\$2200	LIMPOPO
OSTRICH	\$600	LIMPOPO
RED HARTEBEEST	\$1400	LIMPOPO/FREESTATE
REEDBUCK (COMMON)	\$1800	FREESTATE
REEDBUCK (MOUNTAIN)	\$1200	FREESTATE
ROAN	\$6000	LIMPOPO
SABLE ANTELOPE	\$5000	LIMPOPO
SPRINGBUCK (BLACK)	\$900	FREESTATE
SPRINGBUCK (COMMON)	\$500	FREESTATE
SPRINGBUCK (COPPER)	\$1500	FREESTATE

TROPHY FEES		
SPECIES	PRICE (USD \$)	AREA
SPRINGBUCK (WHITE)	\$1500	FREESTATE
STEENBUCK	\$500	LIMPOPO
TSESSEBE	\$2200	LIMPOPO
VERVET MONKEY	\$150	LIMPOPO
WARTHOG	\$1000	LIMPOPO
WATERBUCK	\$2200	LIMPOPO
ZEBRA (BURCHELLS)	\$1200	LIMPOPO
ZEBRA (MOUNTAIN)	\$2000	FREESTATE
NIGHT HUNTING		
AFRICAN WILDCAT	\$1000	LIMPOPO/FREESTATE
CARACAL (LYNX)	\$1800	LIMPOPO/FREESTATE
CIVET CAT	\$1200	LIMPOPO
GENET CAT	\$500	LIMPOPO
HONEY BADGER	\$2500	LIMPOPO
HYENA (BROWN)	\$3500	LIMPOPO
HYENA (SPOTTED)	\$4000	LIMPOPO
JACKAL	\$250	LIMPOPO
PORCUPINE	\$300	LIMPOPO
SERVAL	\$2000	ON REQUEST

PLEASE INQUIRE IF YOU ARE INTERESTED IN OUR COMPANY ARRANGING AND ACCOMPANYING YOU TO OTHER COUNTRIES IN AFRICA. WE CAN ASSIST YOU SHOULD YOU BE INTERESTED IN SPECIES NOT LISTED ABOVE.

# HUNTING PACKAGES

2024 pricelist

## PACKAGE ONE USD \$ 3950

7-DAY SAFARI FOR ONE HUNTER (5 FULL HUNTING DAYS)

1 X IMPALA

1 X BLESBUCK (COMMON)

1 X BLUE WILDEBEEST

*\$2100 TOWARDS ACCOMMODATION, \$1850 TOWARDS TROPHY FEES FOR ANIMALS EXCHANGED. APPROXIMATELY 15% DISCOUNT PER ANIMAL*

## PACKAGE TWO - FREESTATE HUNT USD \$ 6800

7-DAY SAFARI FOR ONE HUNTER (5 FULL HUNTING DAYS)

1 X SPRINGBUCK (COMMON)

1 X BLESBUCK (COMMON)

1 X BLACK WILDEBEEST

1 X LECHWE

1 X RED HARTEBEEST

*\$2100 TOWARDS ACCOMMODATION, \$4700 TOWARDS TROPHY FEES FOR ANIMALS EXCHANGED. APPROXIMATELY 15% DISCOUNT PER ANIMAL*

## PACKAGE THREE USD \$ 6950

9-DAY SAFARI FOR ONE HUNTER (7 FULL HUNTING DAYS)

1 X IMPALA

1 X BLESBUCK (COMMON)

1 X BLUE WILDEBEEST

1 X KUDU

*\$2700 TOWARDS ACCOMMODATION, \$4250 TOWARDS TROPHY FEES FOR ANIMALS EXCHANGED. APPROXIMATELY 15% DISCOUNT PER ANIMAL*

## PACKAGE FOUR USD \$ 8450

10-DAY SAFARI FOR ONE HUNTER (8 FULL HUNTING DAYS)

1 X IMPALA

1 X BLUE WILDEBEEST

1 X KUDU

1 X ZEBRA OR GEMSBUCK

*\$3000 TOWARDS ACCOMMODATION, \$5450 TOWARDS TROPHY FEES FOR ANIMALS EXCHANGED. APPROXIMATELY 15% DISCOUNT PER ANIMAL*

## PACKAGE FIVE USD \$ 9500

10-DAY SAFARI FOR ONE HUNTER (8 FULL HUNTING DAYS)

1 X IMPALA

1 X DUIKER

1 X BLUE WILDEBEEST

1 X ZEBRA OR GEMSBUCK

1 X WATERBUCK

1 X ELAND

*\$3000 TOWARDS ACCOMMODATION, \$6000 TOWARDS TROPHY FEES FOR ANIMALS EXCHANGED. APPROXIMATELY 15% DISCOUNT PER ANIMAL*

## PACKAGE SIX USD \$ 19 000

12-DAY BUFFALO AND SABLE SAFARI FOR ONE HUNTER (10 FULL HUNTING DAYS)

1 X BUFFALO BULL

1 X SABLE

*\$3600 TOWARDS ACCOMMODATION, \$14300 TOWARDS TROPHY FEES FOR ANIMALS EXCHANGED. APPROXIMATELY 15% DISCOUNT PER ANIMAL*

# DAILY RATES

## Terms and Conditions

### PAYMENT TERMS AND CONDITIONS

- ▣ All prices are quoted in US dollars and set per season
- ▣ A booking will only be confirmed when a minimum of 30% of the total daily rates is received as a deposit. Payment of a minimum of 30% of the total daily rates will determine the trophy fees by the year in which the hunt will take place, whereas a payment of 100% of the total daily rates will lock the trophy fees at the rates of the year in which a deposit is received, unless stated differently within your contract.
- ▣ The outstanding balance of the total daily rates is due upon arrival at camp.
- ▣ Daily rates start on day of arrival at airport and ends on day of departure.
- ▣ Final bill to be settled upon day of departure.
- ▣ No refund of deposit can be made if safari is cancelled 9 months or less, prior to commencement.
- ▣ Booking may be postponed to an alternative date in the same season or the following season without a penalty.
- ▣ Any further cancellation, regardless the notification period results in a 100% forfeit.
- ▣ All payments to be made in cash, wire transfer, credit card or PayPal payment. No cheques!

### PRICES INCLUDE

- ✔ FULL BOARD LUXURY SAFARI LODGE ACCOMMODATION
- ✔ DAILY LAUNDRY AND CLEANING SERVICES
- ✔ BEVERAGES AND MEALS SERVED IN CAMP. INCLUDING ALCOHOL IN MODERATION (WINE, BEER AND SOFT DRINKS)
- ✔ SERVICE OF A LICENSED PROFESSIONAL HUNTER, TRAINED STAFF, SKINNERS AND TRACKERS
- ✔ FIELD PREPARATION OF TROPHIES
- ✔ TRANSPORTATION TO OUR LOCAL PREFERRED TAXIDERMIST RESPONSIBLE FOR SHIPPING YOUR TROPHIES
- ✔ ROAD TRANSFERS BETWEEN POLOKWANE INTERNATIONAL AIRPORT AND HUNT CONCESSION ON ARRIVAL AND DEPARTURE DAYS
- ✔ HUNTING LICENSE FEES (INCLUDED IN TROPHY FEES)
- ✔ ALL LAND TRANSPORTATION WHILE HUNTING
- ✔ WIRELESS INTERNET (WI-FI) AT CAMP

### PRICES EXCLUDE

- ✘ ALL INTERNATIONAL/DOMESTIC FLIGHTS, AIR CHARTERS AND VEHICLE TRANSFER BEFORE/AFTER CONTRACTED HUNTING PERIOD
- ✘ ANY EXTRA HOTEL ACCOMMODATION INCLUDING DAY OF ARRIVAL IF FLIGHT ARRIVAL IS AFTER 02H00 PM
- ✘ TROPHY FEES OF ANIMALS KILLED OR WOUNDED
- ✘ HIRE OF FIREARMS AND AMMUNITION
- ✘ TAXIDERMY - DIPPING, PACKING AND SHIPPING
- ✘ LOCAL TRANSFER TRIP/S
- ✘ ROAD TRANSFERS BETWEEN OR TAMBO INTERNATIONAL AIRPORT IN JOHANNESBURG AND HUNT CONCESSION ON ARRIVAL AND DEPARTURE DAYS
- ✘ GRATUITIES FOR SAFARI STAFF AND PROFESSIONAL HUNTERS
- ✘ BAITING FEE/S WHERE REQUIRED
- ✘ MEALS AND LIQUOR OUTSIDE OF CAMPS AND HUNTING AREAS

# HUNTING PACKAGES

## Terms and Conditions

### PAYMENT TERMS AND CONDITIONS

- ▣ All prices are quoted in US dollars and set per season
- ▣ A booking will only be confirmed when a minimum of 30% of the package price is received as a deposit. Payment of a minimum of 30% of the package price will determine the trophy fees by the year in which the hunt will take place, whereas a payment of 100% of the package price will lock the trophy fees of any additional animals at the rates of the year in which a deposit is received, unless stated differently within your contract.
- ▣ The outstanding balance of the package price is due upon arrival at camp.
- ▣ Daily rates start on day of arrival at airport and ends on day of departure.
- ▣ Final bill to be settled upon day of departure.
- ▣ Should you prefer trade an animal included in the package with another animal, the credit given will be the price on the most recent pricelist, minus approximately 15% on your chosen animal. The trophy credit will be indicated on each package.
- ▣ No refund of deposit can be made if safari is cancelled 9 months or less, prior to commencement.
- ▣ Booking may be postponed to an alternative date in the same season or the following season without a penalty.
- ▣ Any further cancellation, regardless the notification period results in a 100% forfeit.
- ▣ All payments to be made in cash, wire transfer, credit card or PayPal payment.  
No cheques!

### PRICES INCLUDE

- ✓ FULL BOARD LUXURY SAFARI LODGE ACCOMMODATION, DAILY LAUNDRY AND CLEANING SERVICES
- ✓ BEVERAGES AND MEALS SERVED IN CAMP. INCLUDING ALCOHOL IN MODERATION (WINE, BEER AND SOFT DRINKS)
- ✓ SERVICE OF A LICENSED PROFESSIONAL HUNTER, TRAINED STAFF, SKINNERS AND TRACKERS
- ✓ FIELD PREPARATION OF TROPHIES
- ✓ TRANSPORTATION TO OUR LOCAL PREFERRED TAXIDERMIST RESPONSIBLE FOR SHIPPING YOUR TROPHIES
- ✓ ROAD TRANSFERS BETWEEN POLOKWANE INTERNATIONAL AIRPORT AND HUNT CONCESSION ON ARRIVAL AND DEPARTURE DAYS
- ✓ HUNTING LICENSE FEES (INCLUDED IN TROPHY FEES)
- ✓ ALL LAND TRANSPORTATION WHILE HUNTING
- ✓ WIRELESS INTERNET (WI-FI) AT CAMP
- ✓ TROPHY FEES OF ANIMALS MENTIONED IN THE PACKAGE. TAKEN, WOUNDED OR LOST.

### PRICES EXCLUDE

- ✗ ALL INTERNATIONAL/DOMESTIC FLIGHTS, AIR CHARTERS AND VEHICLE TRANSFER BEFORE/AFTER CONTRACTED HUNTING PERIOD
- ✗ ANY EXTRA HOTEL ACCOMMODATION INCLUDING DAY OF ARRIVAL IF FLIGHT ARRIVAL IS AFTER 02H00 PM
- ✗ TROPHY FEES OF EXTRA ANIMALS KILLED OR WOUNDED
- ✗ HIRE OF FIREARMS AND AMMUNITION
- ✗ TAXIDERMY - DIPPING, PACKING AND SHIPPING
- ✗ LOCAL TRANSFER TRIP/S
- ✗ ROAD TRANSFERS BETWEEN OR TAMBO INTERNATIONAL AIRPORT IN JOHANNESBURG AND HUNT CONCESSION ON ARRIVAL AND DEPARTURE DAYS
- ✗ GRATUITIES FOR SAFARI STAFF AND PROFESSIONAL HUNTERS
- ✗ BAITING FEE/S WHERE REQUIRED
- ✗ MEALS AND LIQUOR OUTSIDE OF CAMPS AND HUNTING AREAS

PLEASE NOTE! ALL HUNTING PACKAGES MAY BE CUSTOMISED. FOR CUSTOM-MADE PACKAGES PLEASE CONTACT US. ALL PACKAGE PRICES ARE FOR ONE HUNTER ONLY. OBSERVERS CAN BE ADDED TO ANY OF THESE PACKAGES FOR \$200 PER PERSON PER DAY. EXTRA SPECIES AND DAYS CAN BE ADDED AS PER CURRENT PRICELIST.

# DAY TRIPS

# Mapungubwe National Park

**FULL DAY TOUR** (Minimum of 2 people) USD \$ 200 P/P/D

**HALF DAY TOUR** (Minimum of 2 people) USD \$ 150 P/P/D

### INCLUDED IN BOTH TOURS:

Entrance Fees

Meals and drinks

Transportation

### DURATION:

Full Day (09h00am - 06h00pm)

Half Day (01h00pm - 06h00pm)

**FULL DAY TIGER FISHING TRIP** (Minimum of 2 people) USD \$ 250 P/P/D

### INCLUDED:

Permit and entrance fees

Rods and bait

Guide

Meals and drinks

Transportation

Probably the most exhilarating freshwater fishing one can find in Africa is that of the Tiger fish, a fierce hunter. Tiger fishing is one of the most exciting fishing experiences for the beginner up to the most avid fisherman or women. Join us in the search for this incredible fish with a reputation of being notoriously ferocious, the lion of the African waters so to speak. You will get the opportunity to sit next to waters, sipping on an ice-cold drink and be surrounded by beautiful scenery, Elephants and other wildlife, a truly immersive experience, one never to be forgotten.



# DAY TRIPS

## Creative classes

### FULL DAY CRAFTING WORKSHOP USD \$150 P/P/P/D

**Includes and excludes:**

+/- 5 hours of crafting (08h00am - 03h00pm)

Lunch (excluding alcoholic beverages)

Travelling to Mogalakwena (+/- 1 hour drive from camp)

### HALF DAY CRAFTING WORKSHOP USD \$100 P/P/P/D

**Includes and excludes:**

+/- 3 hours of crafting (08h00am - 11h00am)

Travelling to Mogalakwena (+/- 1 hour drive from camp)

Lunch (served back at camp)



### POTTERY AND YOGA PACKAGE (Minimum of 2 people) USD \$200 P/P

**Includes:**

50 min yoga class

3 hour pottery class

One local craft gin

A sample set of Demi Lee's ceramic earrings

Travelling to Polokwane (+/- 2 hour drive)

### POTTERY PACKAGE (Minimum of 2 people) USD \$150 P/P

**Includes:**

3 hour pottery class

All materials

Oven baking

One local craft gin

A pair of "Demi Lee's Ceramic Earrings"

Travelling to Polokwane (+/- 2 hour drive)





# ACTIVITIES

## Spa treatments

### SWEDISH MASSAGE

The healing powers of “touch” was discovered by Henrik Ling, a Swedish gymnast. Swedish massage can ease pain and tension from stiff and aching muscles. As tense muscles relax, stiff joints start to loosen and nerves are soothed. Inducing an all-over feeling of relaxation and well-being.

### AROMATHERAPY

Aromatherapy is a holistic massage, using high quality essential oils which aims to produce a physical, spiritual, emotional and mental sense of well-being.

### HOT STONE MASSAGE

Harnessing the properties of the stones, we bathe them in warm water, anoint them with the spicy, sensual aromas of the Orient, and place them on key energy points of the body to harmonize the spirit. Then, in a firm, rhythmic massage sequence, which mimics the strong but steady stream of flowing water, the stones’ warmth relaxes tired and tense muscles, promoting inner peace and tranquility. A treatment, which excites every sense and provides a unique aromatic journey for the soul.

### INDIAN HEAD MASSAGE

Stress and tension are held in the scalp. The scalp tense and tighten up in an attempt to ward off unpleasant stimuli. The healing touch of another’s hands can help us to relax. A good head massage helps the facial and neck muscles relax and worry lines disappear.

### REFLEXOLOGY

Therapeutic reflexology is a non-invasive, holistic therapy based on the fact that there are reflexes in the feet which correspond to organs and glands in the body. By working on these reflexes (specific points) you can treat health problems elsewhere in the body - mind system.

#### IMPORTANT INFORMATION

*Please note that not all treatments might be available at the time of your safari.  
We make use of different companies to drive out to our lodge to come and do the treatments.*

*Available treatments will depend on which massage therapist(s) are available at the time.*

*Please take into consideration the travelling fee which is \$100 for each day the  
massage therapist(s) needs to drive out to the lodge.*

PLEASE NOTE! A \$100 TRAVELLING FEE PER DAY WILL BE APPLICABLE (FIXED COST). MINIMUM OF 4 TREATMENTS TO BE BOOKED, AT LEAST ONE WEEK IN ADVANCE

# ACTIVITIES

## Spa treatments - 2024 pricelist

	MINUTES	USD \$
<b>SWEDISH MASSAGE</b>		
HANDS & FEET	20	35
NECK & SHOULDERS	25	35
BACK, NECK & SHOULDERS	30	40
FULL BODY	60	80
<b>HOT STONE MASSAGE</b>		
BACK, NECK & SHOULDERS	30	60
FULL BODY	60	80
<b>AROMATHERAPY</b>		
BACK, NECK & SHOULDERS	30	50
FULL BODY (HANDS, FEET, FACE, HEAD, ARMS, BACK, NECK & SHOULDERS)	60	80
<b>INDIAN HEAD MASSAGE</b>		
	20	35
<b>CANDLE MASSAGE</b>		
HANDS & FEET	30	40
BACK, NECK & SHOULDERS	30	55
FULL BODY	60	80
<b>DEEP TISSUE MASSAGE</b>		
BACK, NECK & SHOULDERS	30	60
FULL BODY	60	100

	MINUTES	USD \$
<b>OTHER TREATMENTS</b>		
FACIAL TREATMENT	60	60
BODY SCRUB	25	40
MANICURE	45	35
PEDICURE	60	40
BACK TREATMENT (CLEANSE, SCRUB WITH STEAM, EXTRACTION, MASK, MASSAGE)	60	70
MUD WRAP (FULL BODY)	45	50
LASH TINT	15	20
BROW TINT	15	20
<b>WAXING</b>		
EYEBROWS	15	20
UNDER ARM	20	25
FULL ARM	30	40
FULL FACE	30	40
UPPER LIP	15	20
HALF LEG	30	40
FULL LEG	60	50
BIKINI	20	25
BRAZILIAN	45	50

PLEASE NOTE! A \$100 TRAVELLING FEE PER DAY WILL BE APPLICABLE (FIXED COST). MINIMUM OF 4 TREATMENTS TO BE BOOKED, AT LEAST ONE WEEK IN ADVANCE

# PHOTOGRAPHIC SAFARI DESTINATIONS

## *Kruger National Park*



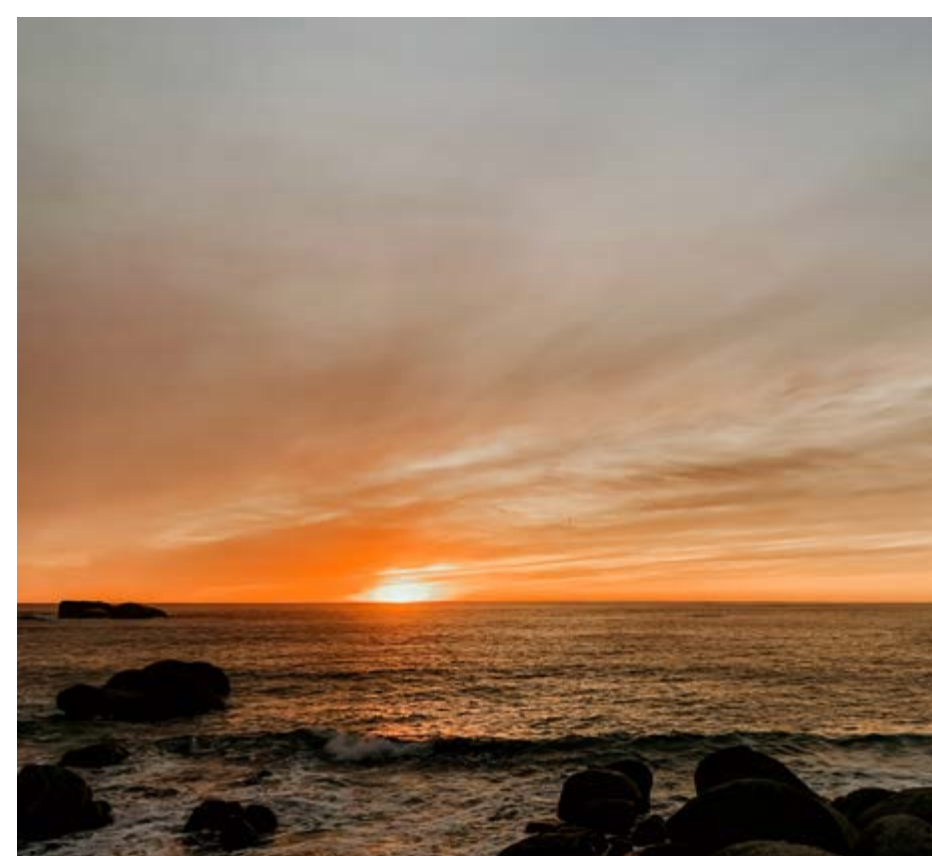
Kruger National Park is home to the widest diversity of wildlife in South Africa and ultimately delivers some of the best animal sightings on the continent. It is one of South Africa's most incredible safari destinations with magnificent flora and fauna due to their practices geared towards sustainability and the protection of wildlife, offering something special for every conscious traveller.

# PHOTOGRAPHIC SAFARI DESTINATIONS

## Cape Town

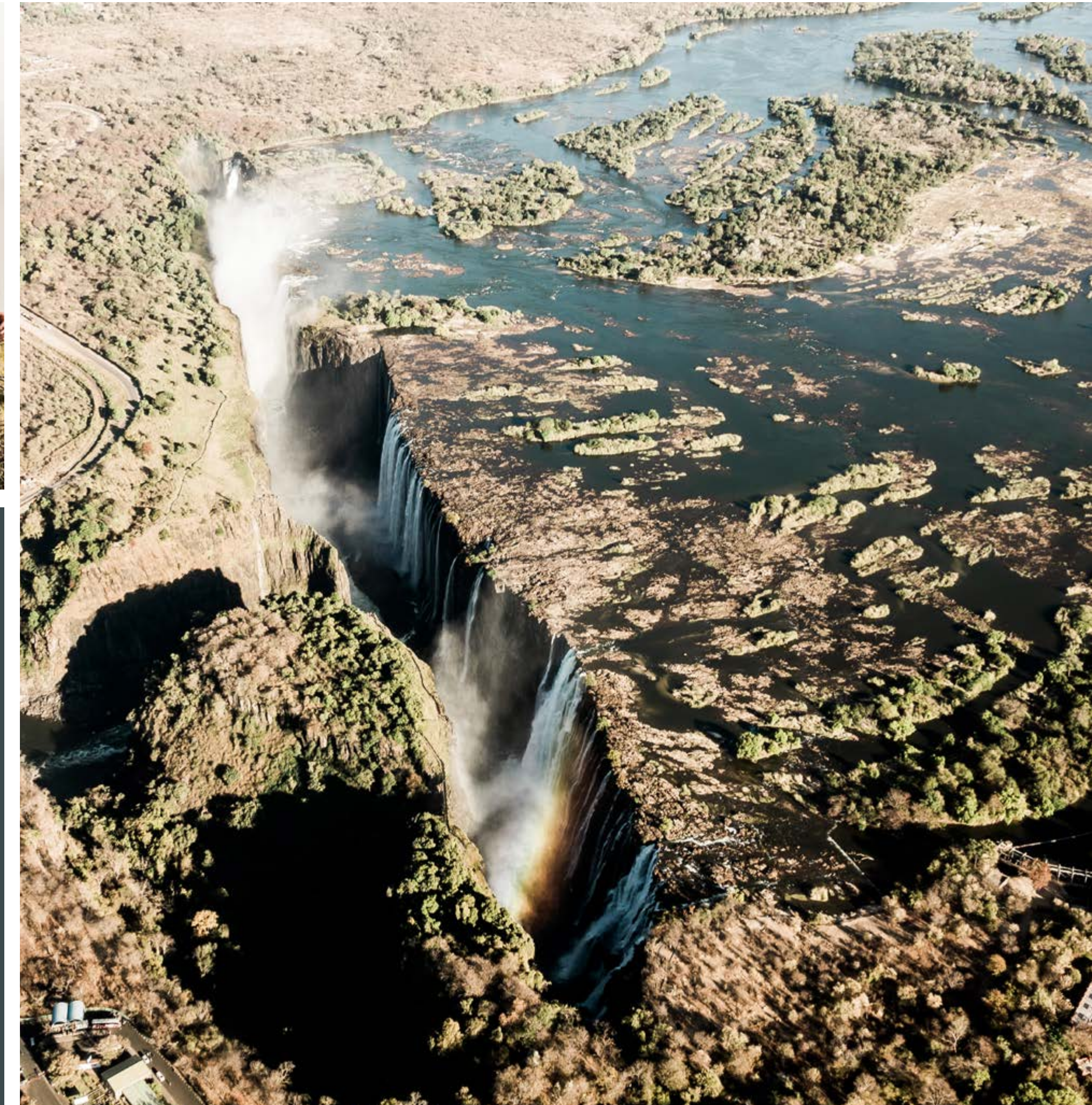


Cape Town, situated on the southernmost tip of Africa, is known for its beautiful beaches, magnificent scenery and superb wine and dine experiences. It is where the icy Atlantic Ocean meets the warmer Indian Ocean, where a flat-topped mountain called, Table Mountain hovers over the city and its golden beaches. On the other side of the iconic Table Mountain you will find picturesque little beach towns such as Fish Hoek, Simon's Town, Muizenberg with its colourful beach huts and the penguins of Boulders Bay. Inland you will find exquisite Winelands and adorable little villages on the West Coast, each with its own distinct personality. Cape Town really is a magical city with a wide variety of attractions to keep the entire family entertained.



# PHOTOGRAPHIC SAFARI DESTINATIONS

## Victoria Falls



Located on the Zambezi River, which forms the border between Zambia and Zimbabwe, you will find the mighty and magnificent Victoria Falls. It is called “The Smoke that Thunders” by the Kololo tribe living in the area due to the immense spray and loud noise caused by the rushing water that falls a curtain of more than a mile in width and 300 feet down into a gorge. Those prepared to brave the tremendous spray on what could be called a mist-soaked rain forest will be greeted with an unparalleled series of views of the Falls. To experience the Falls in all its glory it is best to visit the Falls in peak flood season which is around March and April.

# PHOTOGRAPHIC SAFARI DESTINATIONS

*Botswana*

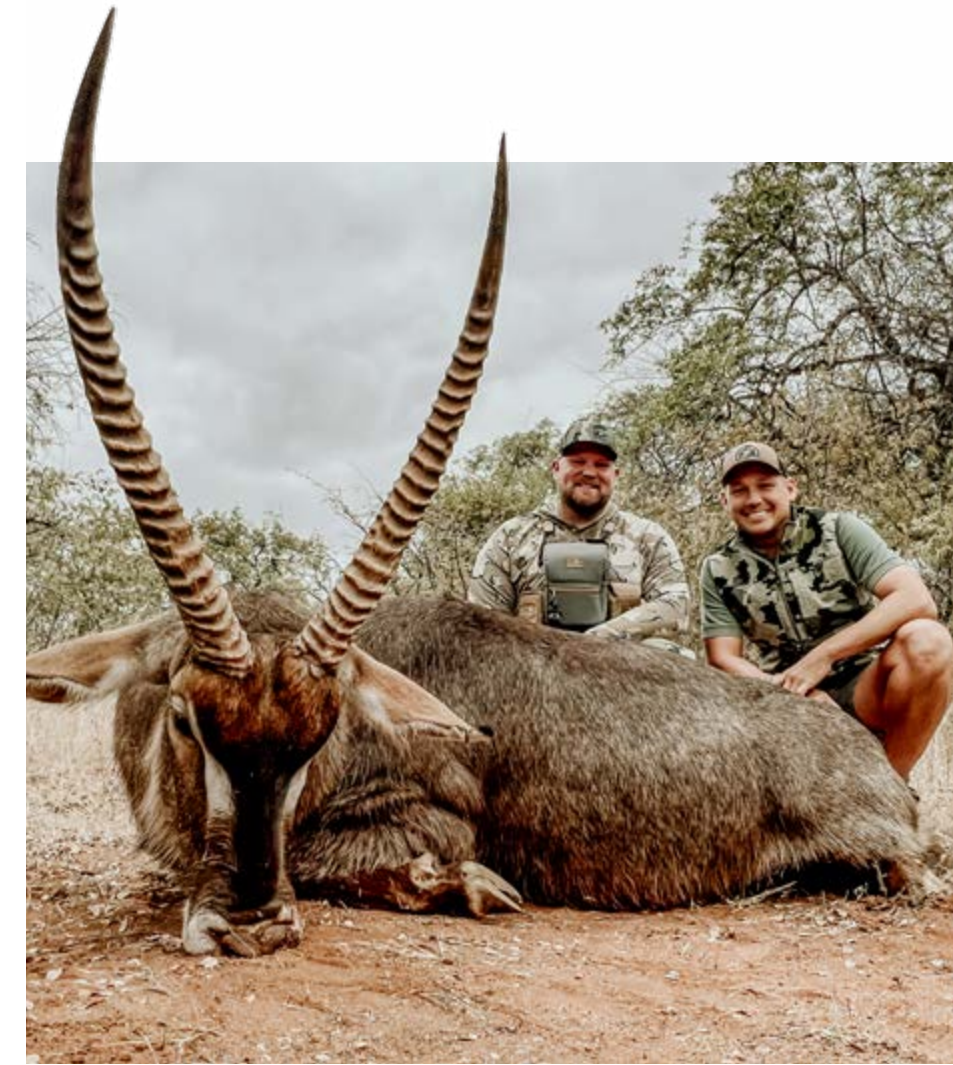


Botswana is such a diverse country with the south and east comprising of mainly dry terrain, such as the Kalahari Desert and lunar-like pans at Nxai and Makgadikgadi, and in the north and west the extraordinary water masses of the Okavango Delta and Chobe River. The multifaceted ecosystem of Botswana ceases to amaze anyone with a love for animals and the outdoors. To view Botswana in all its game-viewing glory, why not gander this wildlife paradise on a “mokoro”, a canoe made from hollowed-out sausage tree trunks. This game-viewing “vehicle” are poled along quietly, getting you up close and personal with the wildlife.



# TROPHY ROOM

2023 Highlights



# TROPHY ROOM

2023 Highlights





# TROPHY ROOM

2023 Highlights



# TROPHY ROOM

2023 Highlights



# TROPHY ROOM

2023 Highlights



# TROPHY ROOM

2023 Highlights



# CONTACT US

*If you would like to get in touch or want more information, please contact us by clicking on any one of the buttons below.*



VISIT OUR WEBSITE



SEND US AN EMAIL

LIKE US ON FACEBOOK



FOLLOW OUR INSTAGRAM PAGE



FIND US ON GOOGLE MAPS



**CHAT WITH US ON WHATSAPP MESSENGER**

POINT YOUR PHONE CAMERA AT THE QR CODE AND TAP THE BANNER THAT APPEARS or CLICK ON THE QR CODE

